

## **RELAX, YOU GOT THIS!**

Half Off Ponds has all the products you need to build and maintain the water feature you want. We have over 550 fish pond, water garden and backyard waterfall kits to choose from. We're one of the largest online retailers of pond liner, pond pumps, lighted spillways, landscape lighting, air pumps and aeration systems.

Our trained customer service team is available to help you through the entire project, from selection & installation through ongoing care & maintenance. Please feel free to call us for design & build tips, product advice and technical assistance.

## **CUSTOMER POND POINTS**

Redeemable on your next purchase

We like to reward our customers by giving back. That is why we set up our pond points rewards program. For each dollar, our loyal customers spend with us we give back 3% of their total purchase in the form of Pond Points. Pond Points are awarded for completed and shipped orders. Pond points can be used on future purchases. Thanks for your business; we appreciate it!



Half Off Ponds  
1000 Liberty Industrial Drive  
O'Fallon, MO 63366

1-866-831-6558  
[www.halfoffponds.com](http://www.halfoffponds.com)



## Aqua Pulse Series Pond Pump

## OWNER'S MANUAL



## Aqua Pulse Series Pond Pumps

**Pump Models:** AP-550, AP-800, AP-1200, AP-1600, AP-2000, AP-3000, AP-4000, AP-5200, AP-6100, AP-8000, AP-10000, AP-12000

Please read these instructions thoroughly and understand them prior to installation or use. If you have any questions, please call 1-866-831-6558.

Model	Rated Volts / Hz	Rated Watts / Amps	Outlet Diameter	Max Flow (GPH)	Max Head	Max. Depth
AP-550	120 / 60	54 / .45	1.5	550	11'	6.5
AP-880	120 / 60	82 / .68	1.5	800	13'	6.5
AP-1200	120 / 60	144 / 1.2	1.5	1,200	17'	6.5
AP-1600	120 / 60	156 / 1.3	1.5	1,600	18'	6.5
AP-2000	120 / 60	190 / 1.6	1.5	2,000	20	6.5
AP-3000	120 / 60	290 / 2.4	1.5	3,000	21	6.5
AP-4000	120 / 60	320 / 2.7	1.5	4,000	21	6.5
AP-5200	120 / 60	420 / 3.5	2	5,200	24	6.5
AP-6100	120 / 60	520 / 4.3	2	6,100	27	6.5
AP-8000	120 / 60	660 / 5.5	2	8,000	29	6.5
AP-10000	120 / 60	1000 / 8.3	3	10,000	39	6.5
AP-12000	120 / 60	960 / 8.0	3	10,000	39	6.5

## PROPER USE

These pumps are to be used as submersible pumps in Koi ponds, water gardens, waterfalls, and fountain applications to circulate and oxygenate clear water. You can use the suction cups or four screws to mount it. If mounted to an appropriate base, make sure that the pump is securely installed before operation.

Proper care and maintenance will keep your pump functioning efficiently, and will extend the service life of the pump. Please review the Proper Care and Maintenance section of this manual for care and maintenance tips.

These pumps are not designed or intended for use in applications other than those listed. Using these pumps in non-approved applications may subject the user to dangers and hazards, and will void the warranty.

## WARRANTY

These products, distributed by Half Off Ponds (HOP) are warranted to the original user only to be free of defects in material and workmanship for a period of 24 months from the date of purchase, but not more than 30 months from the date of manufacture. HOP liability under this warranty shall be limited to repairing or replacing, at HOP's discretion, without charge, F.O.B. HOP will not be liable for any cost of removal, installation, transportation, or other charges which may arise related to a warranty claim.

**Pump Models:** AP-550, AP-800, AP-1200, AP-1600, AP-2000, AP-3000, AP-4000, AP-5200, AP-6100, AP-8000, AP-10000, AP-12000

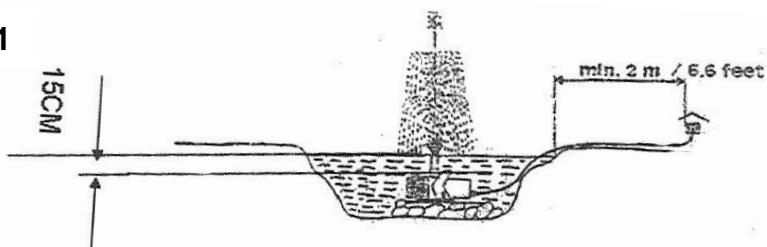
To obtain service under this warranty, the defective product must be returned to HOP together with proof of purchase and installation date, failure date, and supporting installation data. Any defective product to be returned to HOP or a service center must be sent freight prepaid: documentation supporting the warranty claim and/or an Authorized Warranty Return (AWR) must be included if so instructed. In the absence of suitable proof of purchase date, the effective date of this warranty will be based upon the date of manufacture.

Any replacement product may be either new or like-new, provided it has functionality at least equal to that of the product being replaced. No requests for service under this warranty will be accepted if received more than 30 days after the term of the warranty. Correction of defects, in the manner and for the duration of the warranty described in this warranty, shall constitute complete fulfillment of all liabilities and responsibilities of HOP to the user with respect to the product, and shall constitute full satisfaction of all claims, whether based on contract, negligence, strict liability or otherwise. Except for the obligations specifically set forth in this warranty, in no event shall HOP be liable for direct, indirect, special, incidental, or consequential damages, whether based on contract, tort, or any other legal theory and whether advised of the possibility of such damages.

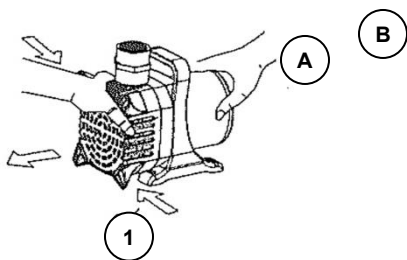
HOP reserves the right to change or improve its products or any portions thereof without being obligated to provide such a change or improvement for units sold and/or shipped prior to such a change or improvement.

THERE ARE NO EXPRESS OR IMPLIED WARRANTIES, INCLUDING MERCHANTABILITY OR FITNESS FOR A PARTICULAR PURPOSE, WHICH EXTEND BEYOND THOSE WARRANTIES DESCRIBED OR REFERRED TO ABOVE EXCEPT AS EXPRESSLY HERIN PROVIDED THE GOODS ARE SOLD "AS IS", THE ENTIRE RISK AS TO QUALITY AND FITNESS FOR A PARTICULAR PURPOSE, AND PERFORMANCE OF THE GOODS IS WITH THE BUYER, AND SHOULD THE GOODS PROVE DEFECTIVE FOLLOWING THEIR PURCHASE, THE BUYER AND NOT THE MANUFACTURER, DISTRIBUTOR, OR RETAILER ASSUMES THE ENTIRE RISK OF ALL NECESSARY SERVICING AND REPAIR.

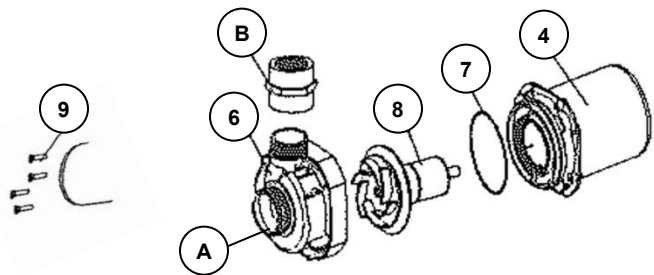
**FIGURE 1**



**FIGURE 2**



**FIGURE 3**



**IMPORTANT: Do not run the pump dry – this will cause damage to the motor and void the warranty.**

**FIGURE 1**

**Used as a Submersible Pump**

- Submerge the pump completely in your pond to make the pump body fill with water.
- A minimum water level of approx. 6 in. is required for submersible use in order to prevent the pump from taking in air. (see fig.1)
- Place the fountain pump above the mud in the pond to prevent the filter becoming prematurely clogged.
- The pump is designed to accommodate internal threads as well as external threads through the socket (fountain jets, nozzles, water height regulators, standpipes, etc.).
- Running in conjunction with fountain jets, the pump should be stationed firmly and horizontally.
- The pump can be switched on by simply plugging it in and switched off by un-plugging it.
- The water temperature should not exceed 95°F (35°C) and do not let the pump freeze in the wintertime.
- This pump is not intended for use by persons, (including children) with reduced physical sensory or mental capabilities, or lack of experience and knowledge, unless they have been given supervision or instruction concerning use of the pump by a person responsible for their safety.
- Children should be supervised to ensure that they do not play with the pump.

**FIGURES 2 & 3**

**Proper Care and Maintenance**

- Always follow the safety instructions. Make sure that the pump is unplugged.
- If the pump is housed in a skimmer make sure the screens and filters in the skimmer are kept clean and free of debris. This will allow water to flow unrestricted into the pump chamber. Every water feature is different; learn how frequently your skimmer needs to be cleaned to allow unrestricted water flow. Pumps run dry and damaged due to restricted water flow in a clogged skimmer are not covered under the terms of the warranty.
- If the pump is operated directly in the water feature make sure the pump intake screen is kept clean and free of debris. Pumps that run dry and damaged due to restricted water flow are not covered under the terms of the warranty.

- In hard water conditions, it is recommended that you periodically remove the pump from the water feature and operate it for up to 36 hours in a solution of CLR (Calcium Lime Rust Remover) and water. Rinse thoroughly before re-installing the pump in the water feature.

### **Disassembling the Pump**

- Follow these step by step instructions if the pump requires more intensive cleaning.
- Press the intake cover (1) together laterally and take it from the pump housing.
- Loosen the 4 outer screws (9).
- Rotate the pump housing (6) ¼ turn counter-clockwise. Unclip it from the motor housing (4).
- Remove the rotor (8) from the motor housing (4).
- Clean all parts using water and a soft sponge. In hard water conditions a mixture of CLR and water bath is recommended.

### **Assembling the Pump**

- Place the rotor (8) in motor housing (4) with caution.
- Make sure the rotor is assembled correctly and will turn freely and check the position of the sealing ring (7) on the pump housing (6).
- Put the pump housing (6) on and turn clockwise ¼ turn. Tighten the 4 screws (9) uniformly.
- Place the intake cover (1) on the pump housing (6).

### **Questions?**

Please call us 1-866-831-6558 or email [info@halfoffponds.com](mailto:info@halfoffponds.com)

## **CAUTION**

These pumps are not for use in swimming pools! Swimming in water being circulated or oxygenated by these pumps poses a severe, imminent and potentially fatal risk to human health.

These pumps should be installed per your local electrical code. Please contact an electrician. For all technical data, please refer to the content stated on the rating label of the pump.

Do not operate these pumps without water. If the pump runs, for any length of time, in a dry condition without water it will damage the pump and void the warranty.

## **Safety Instructions**

- Read and observe all the instructions supplied with the pump and on the pump.
- Make sure that your outlet voltage corresponds to those stated on the rating label of the pump(s).
- Make sure the pump is securely installed before operating it.
- The electrical connection should be in a water-proof area and should be at least 6 feet away from the edge of the pond. (see fig. 1)
- Keep the electrical connections dry! Droop the electrical cord below the electrical outlet to form a “Drip Loop”. This will prevent water from running down the cord into the electrical outlet
- Always unplug the pump when not in use, before putting on or taking off parts, before cleaning the pump and before doing any work for the fountain or pond.
- The pump must not be used when people are working in water. Please disconnect the pump first.
- Do not operate any appliance with a damaged cord or plug, or in abnormal state. The supply cord of the pump cannot be replaced.
- **If the cord is damaged the pump should be scrapped.**
- **Do not cut the plug end off the cord for any reason. Cutting the cord voids the warranty and may create an electrical hazard.**
- For safety reasons, any repair work should be done only by the manufacturer of the products or the authorized service facility or discard it
- Never hang or transport the pump by means of pulling the power cord!
- Close supervision is necessary when the pump is used by or near children.
- If you want to disconnect the pump, you can pull out the plug and the plug must be placed where you can access it.
- Never use any accessories which are not recommended by the pump manufacturer. It may result in fire, electric shock, personal injury and/or voided warranty.
- The pump is to be supplied through a Ground Fault Circuit Interrupter (GFCI) with a rated residual operating current not exceeding 30mA.
- To protect against the risk of electrical shock, do not immerse the plug-in water or other liquid.

## SHOP OUR FULL SELECTION AT HALF OFF PONDS

### Complete Pond & Pondless Kits

Largest online selection of complete, everything-you-need kits. Choose from our standard kits or full custom options.



### Pond Liner & Underlayment Combos

Half Off Ponds offers the widest range of pond liner materials and sizes. Your trusted source for EPDM, PVC & HDPE liners.



### Submersible Pond Pumps

Complete range of energy efficient small statuary and fountain pumps to high flow 10,000+ GPH large fish pond and waterfall pumps.



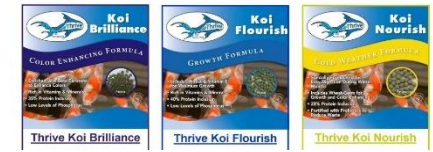
### Water Treatments

Create healthy environments for your water garden or prized koi fish.



### Fish Food

Select from growth, color enhancing, or cold weather formulations.



### Filtering Waterfalls, Skimmers & Pressure Filters

Establish and maintain pristine pond water.



### Pond & Landscape Lighting

Beautiful finishing touches that show off your pond & landscape.



### Lighted Spillways & Kits

Build striking formal falls with lighted acrylic & stainless steel spillways.



8 DIFFERENT COLOR OPTIONS



### Seasonal Care & Maintenance

Everything you need to prepare & maintain your pond all year long.



## **OVERLOAD PROTECTION**

The pump has a built-in thermal overload trip which prevents the pump from overheating. The pump must be allowed to cool down before restarting. If the pump will not start again automatically when cooling down, please check the following conditions;

- Is there sufficient water supply? → *add water if necessary*
- Has the filter become clogged? → *Clean if necessary*
- Has dirt entered the pump housing? → *follow the cleaning instructions in the Proper Care and Maintenance section.*
- Have hoses or jets become clogged? → *Clean if necessary*
- Has the pump sufficiently cooled down after overheating?
- As soon as you have completed this checklist, you can start the pump again by plugging it back in.

## **WARNING:**

- Risk of electric shock – This pump is supplied with a grounding conductor and grounding type attachment plug. To reduce risk of electric shock, be certain that it is connected only to properly grounded, grounding-type receptacle
- To reduce the risk of electrical shock, use only on portable self-contained fountains no larger than 5 ft. in any dimension.
- Risk of electric shock. Do not remove cord and strain relief. Do not connect conduit to pump.
- This pump has been evaluated for use with water only.
- Reduce risk of electric shock during operation of this pump requires the provision of acceptable grounding
- Risk of electric shock – This pump has not been investigated for use in swimming pool or marine areas.
- Do not connect to any voltage other than that shown on the pump
- Always disconnect from electrical supply before handling pump.
- Don't operate without water
- Operate pump completely submerged for proper cooling