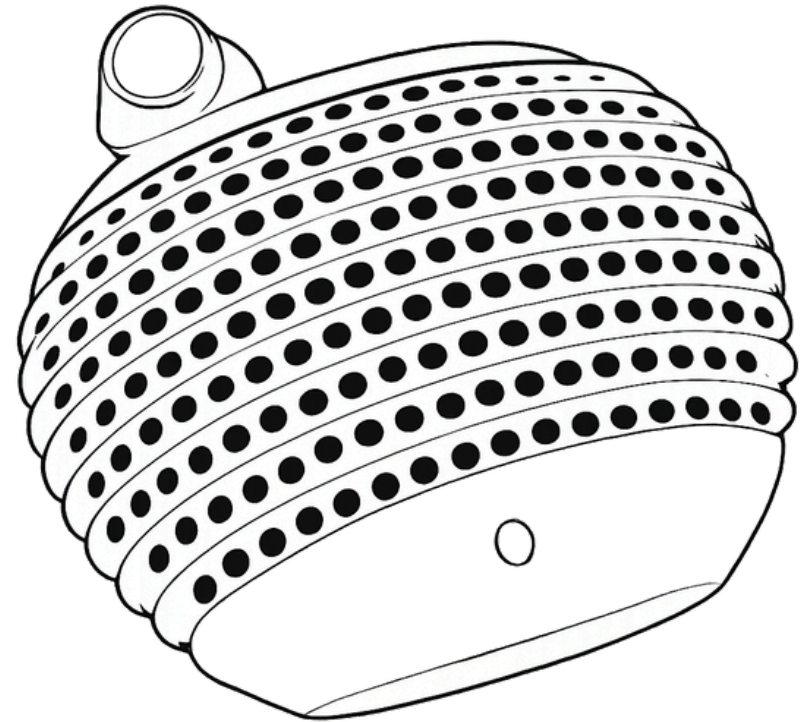


HydroFlow Submersible Pond Pump Instructions

PLEASE READ ALL INSTRUCTIONS BEFORE INSTALLING OR
OPERATING THIS PUMP.

half off POND[®]
amazing pond supplies & kits



info@halfoffponds.com
1-866-831-6558
halfoffponds.com

MODELS
1200-5000

Electrical Safety and General Warnings

- Install the pump in accordance with your local electrical code. If you are unsure, contact a qualified electrician.
- Refer to the rating plate/type plate on the pump for all technical data.
- Before use, always check that the power cord, plug, and motor connection are intact.
- Confirm the voltage and current match the information on the pump's type plate.
- The pump must be connected to a ground-fault protective device (FI/RCD/GFCI) rated no more than 30 mA.
- Keep all electrical connections dry and located in a waterproof area, at least 2 meters (6 ft) from the edge of the pond.
- Always unplug the pump before performing any work on the pump.
- Do not use the pump when people are in the water or working in the water (disconnect the pump first).
- Never hang or carry the pump by the power cord.
- To disconnect, pull the plug (do not pull the cord). Keep the plug in a place where it is easy to access.
- For safety reasons, repairs must be performed only by the manufacturer.
- The power cord cannot be replaced. If the cord or pump housing is damaged, the pump must be discarded and replaced.
- Never allow the pump to run dry.

Overload Protection

The pump includes built-in thermal overload protection to prevent overheating. If the pump overheats, it will shut off. Allow the pump to cool before restarting.

After cooling, check the following:

- Is there sufficient water supply? → Add water if necessary
- Is the filter clogged? → Clean if necessary
- Has debris entered the pump housing? → Follow the cleaning steps in Section 5
- Are hoses or fountain jets clogged? → Clean if necessary
- Has the pump cooled down completely?

After correcting the issue, restart the pump by plugging it back in.

Standard Maintenance and Cleaning

1. Follow all safety precautions and unplug the pump.
2. Press the filter cover inward from both sides and remove it from the pump.
3. Loosen the outer screws.
4. Unclip the pump housing from the motor housing.
5. Remove the rotor assembly from the motor housing.
6. Clean all parts using clean water and a soft sponge. Do not use solvents or harsh cleaners.

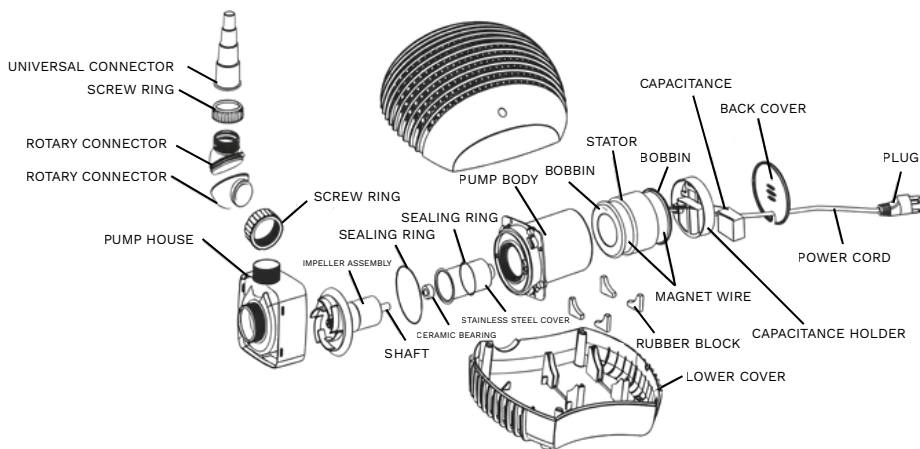
Reassembly

Reassemble carefully to ensure a proper seal and correct operation:

- Carefully place the rotor assembly back into the motor housing.
- Ensure the rotor assembly is seated correctly, moves freely, and can turn.
- Check that the sealing ring is correctly positioned on the pump housing.
- Fit the pump housing back onto the motor housing and tighten the screws evenly.
- Reinstall the filter cover into the pump housing.

Parts Overview

Your pump includes components such as the filter cover, pump housing, impeller/rotor assembly, sealing rings, motor housing, capacitor/capacitor holder, power cord, and plug (see the exploded diagram in your booklet).



Start-Up and Installation

IMPORTANT: Do not let the pump run dry. Running dry can damage the motor.

1. Fully submerge the pump in the pond so the pump body fills with water.
2. A minimum water depth of approximately 15 cm (6 in.) is required for submersible operation to prevent the pump from drawing in air.
3. To reduce premature clogging, position the pump off the bottom of the pond (for example, on a brick).
4. Thread compatibility (with accessories such as fountain jets, nozzles, standpipes, and water-height regulators):
 - 1.5" internal thread (HF-1200, HF-3300)
 - 2" internal thread (HF-5000)
5. When used with fountain jets, the pump should be placed firmly and level.
6. Turn the pump on by plugging it in.
7. Water temperature must not exceed 35°C (95°F). Do not allow the pump to freeze in winter.

HydroFlow Series Flow Chart

